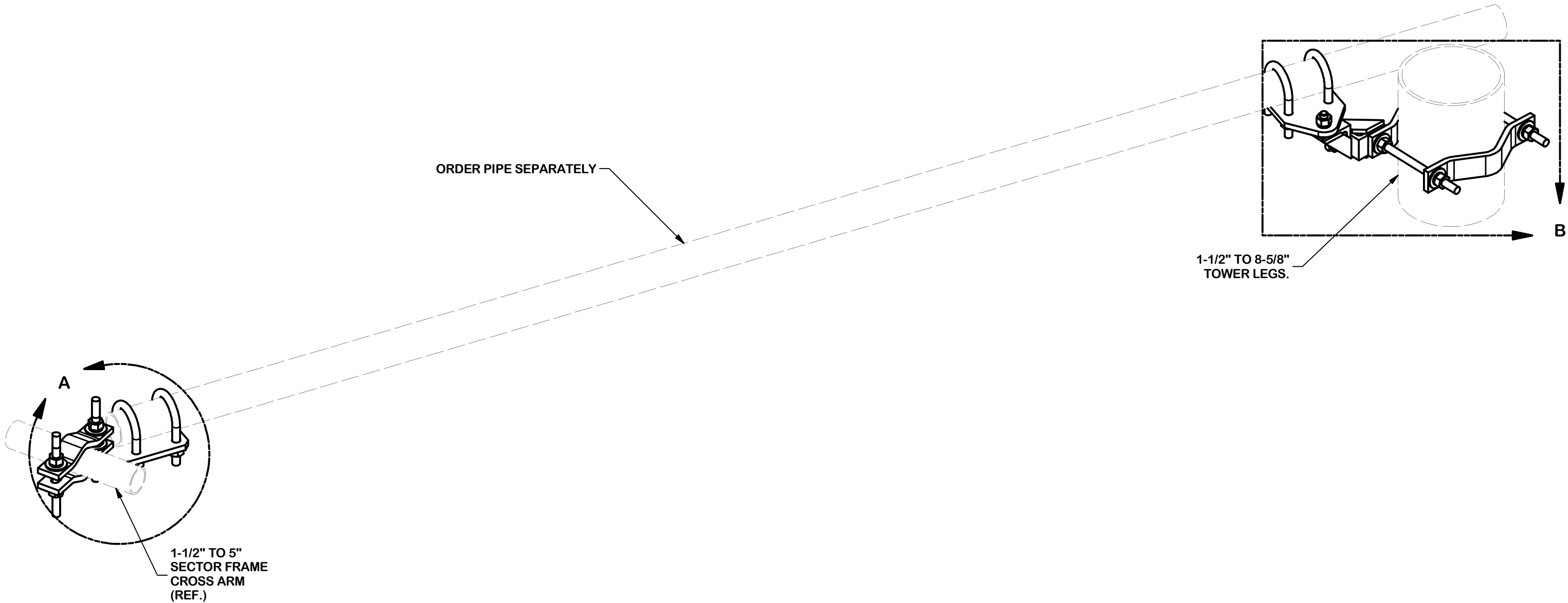


PARTS LIST						
ITEM	QTY	PART NO.	PART DESCRIPTION	LENGTH	UNIT WT.	NET WT.
1	2	X-SPTB278	SLIDING PIPE TIE BACK PLATE	5 1/2 in	5.70	11.40
2	2	X-TBCA	TIE BACK CLIP ANGLE		2.01	4.01
3	2	MCP	CLAMP HALF 1/2" THICK, 11-5/8" LONG	12 1/16 in	3.59	7.19
4	4	DCP	1/2" THICK, 5-3/4" CNTER TO CENTER CLAMP HALF	8 1/8 in	2.36	9.45
5	2	G58R-12	5/8" x 12" THREADED ROD (HDG.)		1.05	2.09
6	4	G58R-8	5/8" x 8" THREADED ROD (HDG.)		0.70	2.79
7	4	X-UB5300	5/8" X 3" X 5-1/4" X 2-1/2" U-BOLT (HDG.)		1.15	4.60
8	4	G5804	5/8" x 4" HDG HEX BOLT GR5		0.44	1.78
9	2	G5802	5/8" x 2" HDG HEX BOLT GR5		0.27	0.54
10	10	G58FW	5/8" HDG USS FLATWASHER	1/8 in	0.07	0.70
11	18	G58LW	5/8" HDG LOCKWASHER		0.03	0.47
12	20	G58NUT	5/8" HDG HEAVY 2H HEX NUT		0.13	2.60
TOTAL WT. #						47.61



TOLERANCE NOTES

TOLERANCES ON DIMENSIONS, UNLESS OTHERWISE NOTED ARE:
SAWED, SHEARED AND GAS CUT EDGES (± 0.030")
DRILLED AND GAS CUT HOLES (± 0.030") - NO CONING OF HOLES
LASER CUT EDGES AND HOLES (± 0.010") - NO CONING OF HOLES
BENDS ARE ± 1/2 DEGREE
ALL OTHER MACHINING (± 0.030")
ALL OTHER ASSEMBLY (± 0.060")

PROPRIETARY NOTE:
THE DATA AND TECHNIQUES CONTAINED IN THIS DRAWING ARE PROPRIETARY INFORMATION OF VALMONT INDUSTRIES AND CONSIDERED A TRADE SECRET. ANY USE OR DISCLOSURE WITHOUT THE CONSENT OF VALMONT INDUSTRIES IS STRICTLY PROHIBITED.

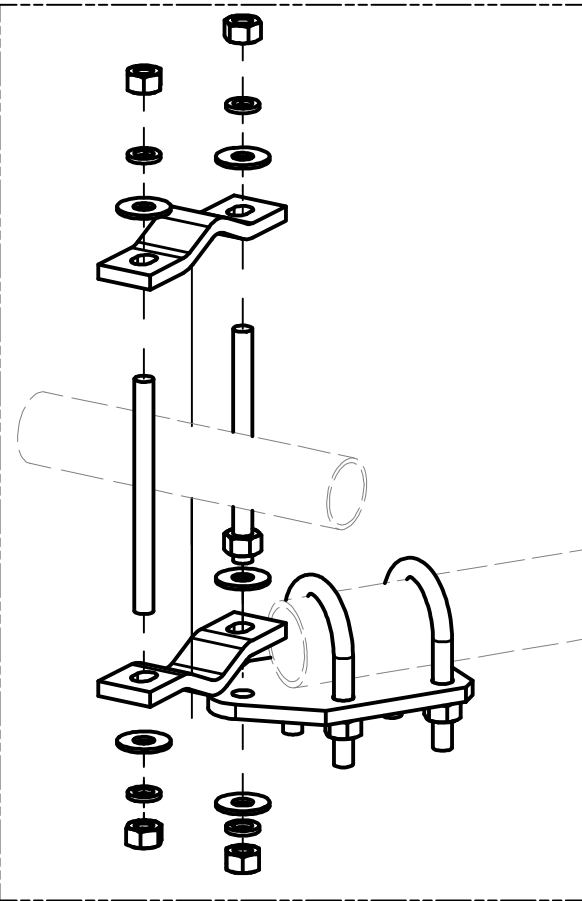
DESCRIPTION
SLIDING PIPE
TIE BACK ASSEMBLY
(NO PIPE)

CPD NO.		DRAWN BY CSL 1/7/2020		ENG. APPROVAL	
CLASS 87	SUB 02	DRAWING USAGE CUSTOMER		CHECKED BY BMC 2/19/2019	

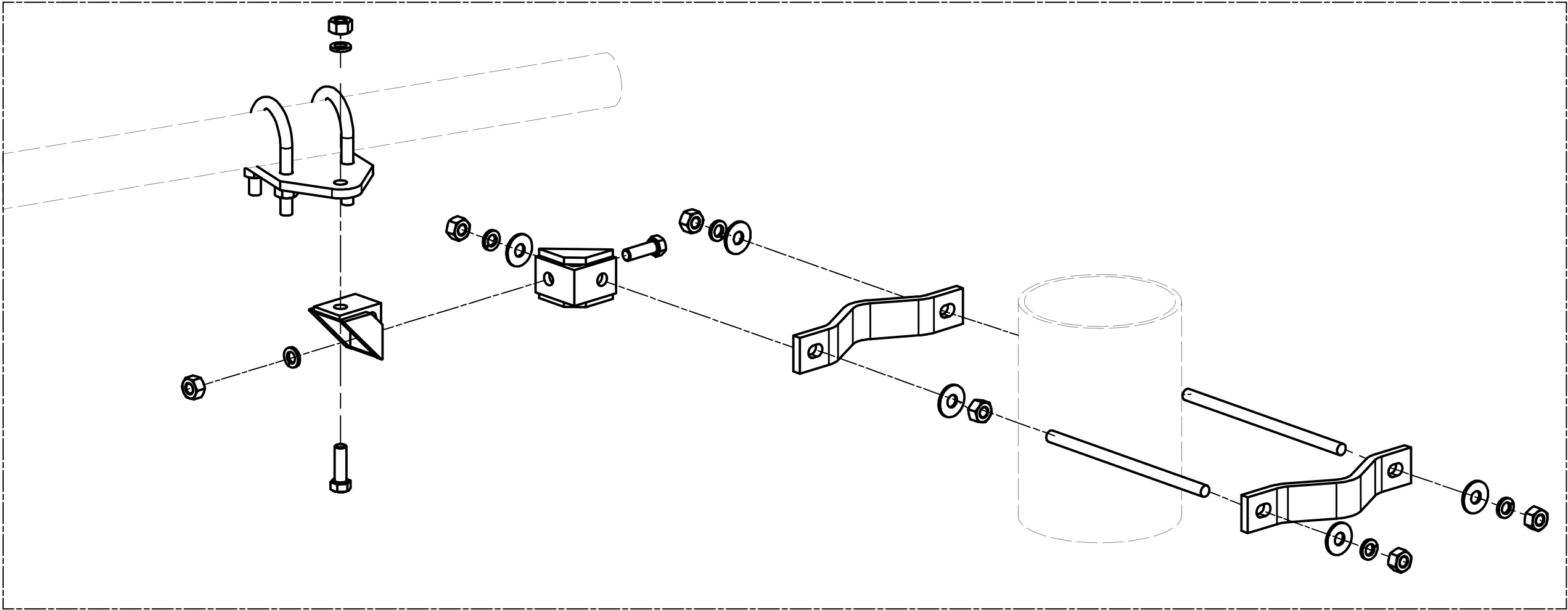


Locations:
New York, NY
Atlanta, GA
Los Angeles, CA
Plymouth, IN
Salem, OR
Dallas, TX
Engineering
Support Team:
1-888-753-7446

PART NO.	SPTB278-NP
DWG. NO.	SPTB278-NP



DETAIL A
P-SPTB278-F



DETAIL B
P-SPTB278-B

SEE PAGE 3 FOR
HARDWARE DETAILS

TOLERANCE NOTES

TOLERANCES ON DIMENSIONS, UNLESS OTHERWISE NOTED ARE:
SAWED, SHEARED AND GAS CUT EDGES ($\pm 0.030''$)
DRILLED AND GAS CUT HOLES ($\pm 0.030''$) - NO CONING OF HOLES
LASER CUT EDGES AND HOLES ($\pm 0.010''$) - NO CONING OF HOLES
BENDS ARE $\pm 1/2$ DEGREE
ALL OTHER MACHINING ($\pm 0.030''$)
ALL OTHER ASSEMBLY ($\pm 0.060''$)

PROPRIETARY NOTE:
THE DATA AND TECHNIQUES CONTAINED IN THIS DRAWING ARE PROPRIETARY INFORMATION OF VALMONT INDUSTRIES AND CONSIDERED A TRADE SECRET. ANY USE OR DISCLOSURE WITHOUT THE CONSENT OF VALMONT INDUSTRIES IS STRICTLY PROHIBITED.

DESCRIPTION
SLIDING PIPE
TIE BACK ASSEMBLY
(NO PIPE)

CPD NO.		DRAWN BY CSL 1/7/2020		ENG. APPROVAL	
CLASS 87	SUB 02	DRAWING USAGE CUSTOMER		CHECKED BY BMC 2/19/2019	

SITE

PRO

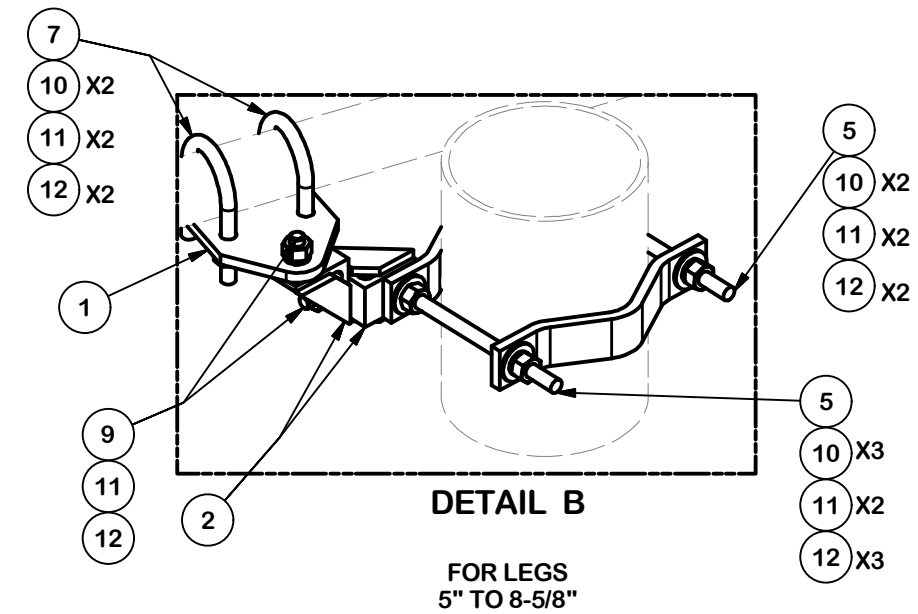
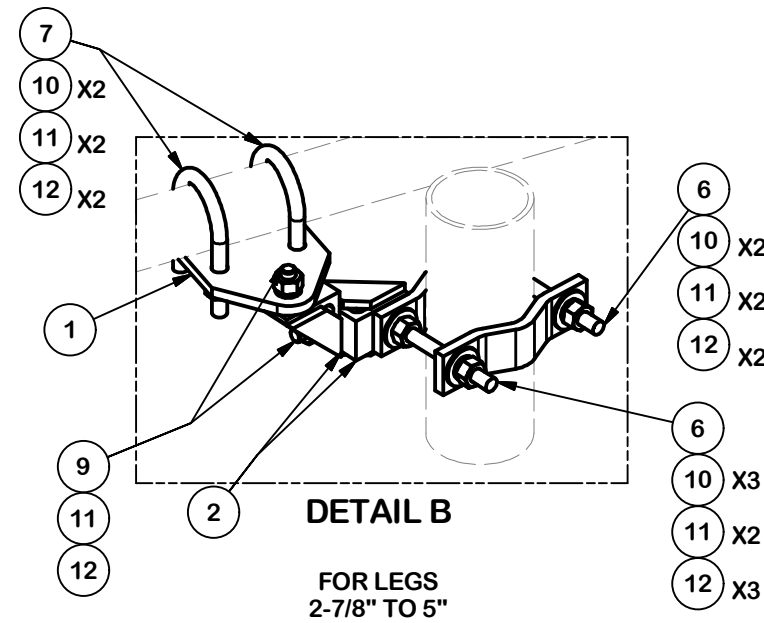
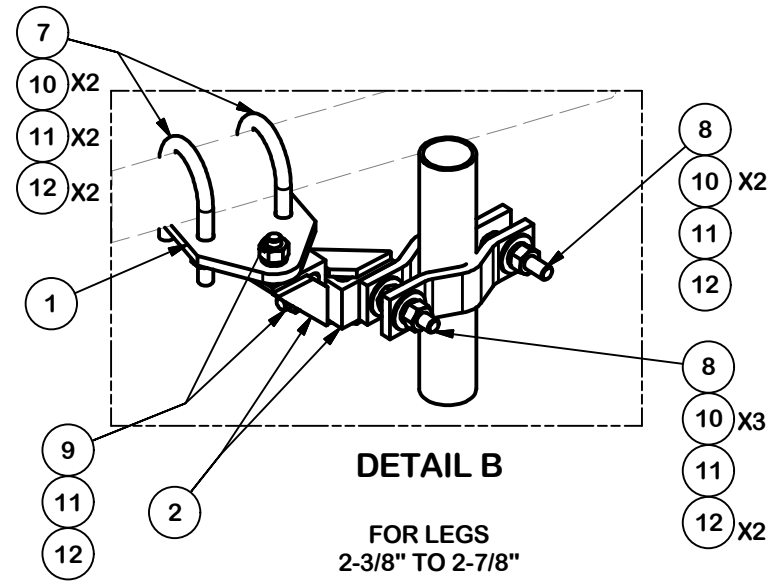
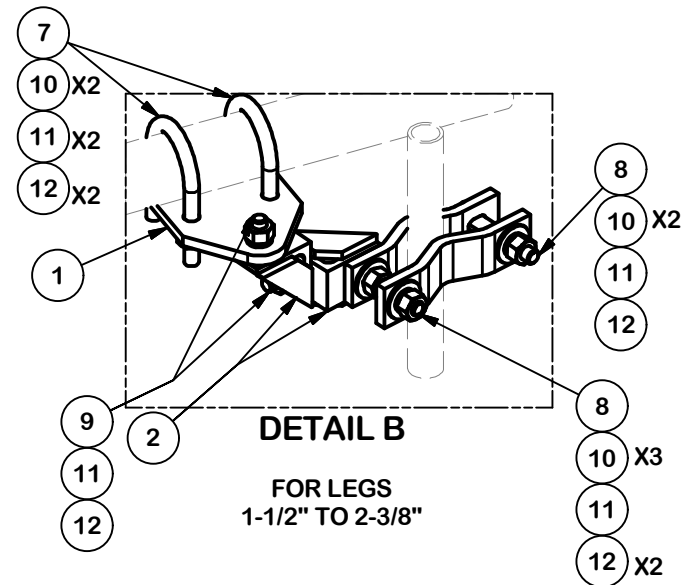
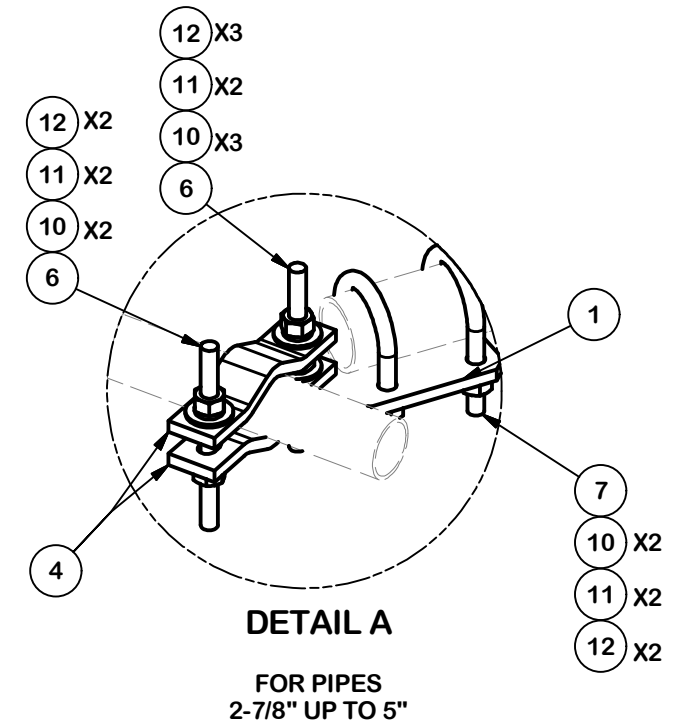
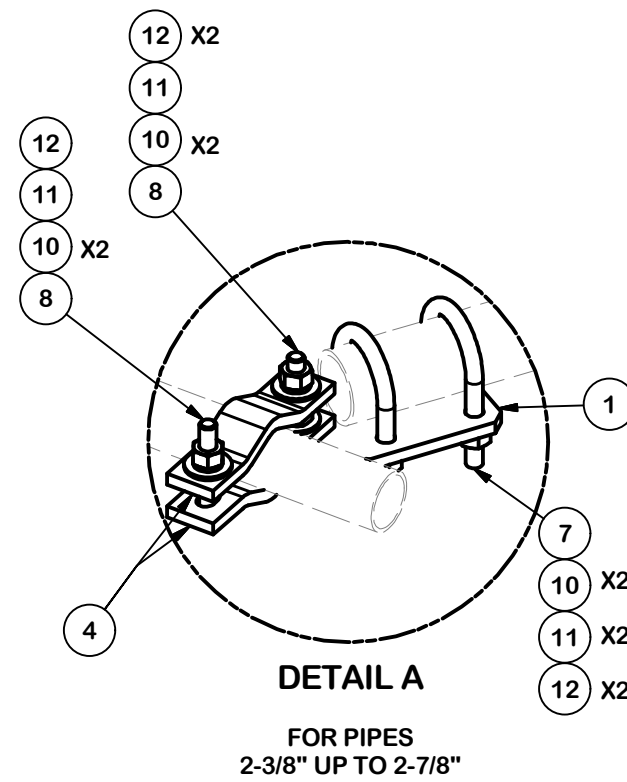
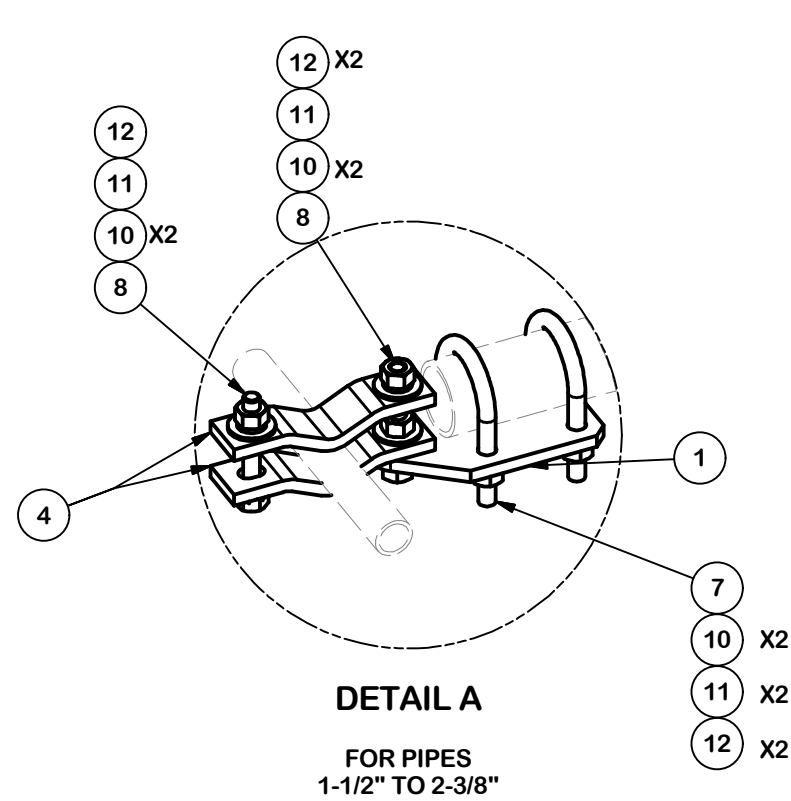
1

A valmont COMPANY

Locations:
New York, NY
Atlanta, GA
Los Angeles, CA
Plymouth, IN
Salem, OR
Dallas, TX

Engineering
Support Team:
1-888-753-7446

PART NO.	SPTB278-NP
DWG. NO.	SPTB278-NP



TOLERANCE NOTES

TOLERANCES ON DIMENSIONS, UNLESS OTHERWISE NOTED ARE:
SAWED, SHEARED AND GAS CUT EDGES ($\pm 0.030"$)
DRILLED AND GAS CUT HOLES ($\pm 0.030"$) - NO CONING OF HOLES
LASER CUT EDGES AND HOLES ($\pm 0.010"$) - NO CONING OF HOLES
BENDS ARE $\pm 1/2$ DEGREE
ALL OTHER MACHINING ($\pm 0.030"$)
ALL OTHER ASSEMBLY ($\pm 0.060"$)

PROPRIETARY NOTE:
THE DATA AND TECHNIQUES CONTAINED IN THIS DRAWING ARE PROPRIETARY INFORMATION OF VALMONT INDUSTRIES AND CONSIDERED A TRADE SECRET. ANY USE OR DISCLOSURE WITHOUT THE CONSENT OF VALMONT INDUSTRIES IS STRICTLY PROHIBITED.

DESCRIPTION			
SLIDING PIPE TIE BACK ASSEMBLY (NO PIPE)			
CPD NO.	DRAWN BY	ENG. APPROVAL	
	CSL 1/7/2020		
CLASS	SUB	DRAWING USAGE	CHECKED BY
87	02	CUSTOMER	BMC 2/19/2019

SITE PRO 1 A valmont COMPANY		Locations: New York, NY Atlanta, GA Los Angeles, CA Plymouth, IN Salem, OR Dallas, TX
Engineering Support Team: 1-888-753-7446		
PART NO.	SPTB278-NP	
DWG. NO.	SPTB278-NP	